

MARQUEE

THE NEWSLETTER OF THE ACTORS FUND

FALL 2011 ISSUE: VOLUME 14, NUMBER 2

Social Services: An Evolving Tradition

In this issue of *Marquee*, we celebrate the history and evolution of our spectrum of Social Services, which your generous support makes available for free to everyone in entertainment who needs our help: 12,486 individuals last year!

Since our founding in 1882, The Fund has helped thousands of entertainment professionals across the country. From our earliest days, we've maintained our tradition of emergency financial assistance, burial services and a retirement home that first opened in 1902. And thanks to your support, these traditions live on.

In 2010, your donations helped 12,486 people through our

- Social Services & Emergency Financial Assistance
- Health Care Services
- Affordable Housing, and
- Employment & Training Services.

...and 4,093 people in need, crisis or transition through our Social Services alone.

Since then, we've continued to evolve with the times, responding to the specific and critical needs within the performing arts and entertainment community. The Fund expanded services due to a number of factors: the challenges of a life in show business—modest income, sporadic work, high cost of housing and many with no health insurance—combined with the more recent realities of the AIDS crisis, the increasing cost of healthcare, work stoppages and economic downturns, as well as unforeseen disasters like Hurricane Katrina and 9/11.

Some of our most important services were added in the early 1980s, when professional social workers joined our team to provide direct service to our community. This enhanced our core tradition of emergency financial assistance by offering counseling, advocacy and linkage to community resources to those in need.

Our clients tell the story of The Fund best, and in this issue you'll hear from them. We've also put together a timeline that summarizes the development of our free and confidential Social Services. Visit us at www.actorsfund.org to make your pledge of support—thank you for being a part of the tradition.



Our New York social services team.



Don Towne provides social services at our Chicago office.



Our Los Angeles social services team.

**The Actors Fund,
for everyone
in entertainment.**

729 SEVENTH AVENUE, 10TH FLOOR
NEW YORK, NY 10019

MARQUEE

In this issue

Social Services: An Evolving Tradition.....	1
Views from Paul Libin and James J. Claffey.....	2
Survey of Older New Yorkers.....	2
Social Services Timeline.....	3
Special Performances and Events.....	4
Donor Profile: Judy Frank.....	4
Client Stories.....	5 – 6

VIEWS *from*

Paul Libin and
James J. Claffey, Jr.

A Tradition of “Taking Care of Our Own”

Dear Friends,

For nearly 130 years, The Actors Fund has maintained the tradition of “taking care of our own” by helping show people in need. When we were founded in 1882, people in the performing arts and entertainment community could be refused assistance due to their low social standing (members of our profession were regularly turned away from most charitable institutions, including many religious organizations, and it was not unusual for them to be denied a decent burial). With the first emergency financial grants for individuals and families, and the first burial for an entertainer left without family or funds in 1886, The Actors Fund stepped in where many others would not. This ultimately led to a change in the way society looked at those who worked in our industry.

As trustees of The Fund, we take our job of preserving this organization very seriously. Today, those original services remain in place, and The Fund has since grown to serve more than 12,000 people annually in theatre, film, television, music, opera, radio and dance. Our programs have also expanded and evolved beyond emergency assistance to include social services, health care and insurance, housing, and employment and training services. In this issue of *Marquee*, you'll learn about how our social services continue to evolve to meet the needs of everyone in entertainment.



Paul Libin, Chairman of
The Broadway League, Executive
Vice President, Jujamcyn Theaters



James J. Claffey, Jr., President,
Local One, I.A.T.S.E.

The brothers and sisters of Local One, who provide the lights, sound, scenery, rigging and special effects for Broadway, major New York concert venues, shops and television broadcasts, are proud of our own history, which dates back to 1886. Jujamcyn Theaters—including the box office treasurers and staff, house managers and ushers, doormen, administrators and others—has a rich history of operating five theatres on Broadway since 1956. Through our partnerships with The Fund, our memberships, staff and their families are provided with free and confidential services, designed to provide support and find solutions to a wide range of personal or work-related problems.

When a colleague is suffering from substance abuse, newly diagnosed with cancer or HIV/AIDS, troubled by debilitating mental illness or needs any sort of help, the first question we should ask is: “Did you call The Fund?” In this issue, you'll hear from members of our community who made that call, and discovered the true meaning of “taking care of our own.”

We're proud to play our part in keeping this organization vital and alive. And we're thankful to you, our generous donors: your support is a lifeline to thousands in need every year. Visit www.actorsfund.org to learn how The Fund helps everyone in entertainment, and to make a donation.

“When a colleague is suffering...the first question we should ask is: ‘Did you call The Fund?’”

NEWS

The Shoe Fits

A grateful client said: “God bless Conrad Cantzen! He established the Shoe Fund in 1945 to help actors buy a new pair of shoes each year to wear while making the rounds. Although the days of popping in on casting directors to ask, ‘Anything for me today?’ have been replaced in large measure by the Internet, actors still do lots of walking; to work, to auditions or even just to keep in shape and stay healthy. I'm grateful to Mr. Cantzen and The Actors Fund for the shoes I'm wearing today.”

To this day, thanks to actor Conrad Cantzen's original \$226,608.34 legacy, currently unemployed performing arts and entertainment professionals who are paid-union members can apply for this unique service which reimburses applicants up to \$40 for one pair of shoes in a 12 month period, providing the shoes cost no more than \$100 before tax. Call 212.221.7301 ext. 146 or visit www.actorsfund.org for an application.

Mark your calendars

Visit www.actorsfund.org and join us for these upcoming events!

October 2
Sister Act, Special Performance,
New York

October 16
*How To Succeed in Business Without
Really Trying*, Special Performance,
New York

October 3–17 and December 5–19
Auction of 1000 Stars

November 7
Love Letters, with Patricia Clarkson
and Bryan Batt, New York

November 30
The Visit, with Chita Rivera
and John Cullum, New York

December 5
Musical Monday—Betty Buckley,
Los Angeles

In New York, call 212.221.7300 ext. 133

In Los Angeles, call 323.933.9244 ext. 434

An Early Tradition of The Fund: Funerals and Burials

One of our earliest traditions is providing funeral and burial services for entertainment professionals in need. As recently as the early twentieth century, it was not unusual for entertainers to be refused a decent burial.

“It is difficult to realize today that in the 1880's actors and others engaged in the theatrical profession could seldom receive help from established church charities. Theatre people were habitually refused admission to their hospitals and homes for the aged because they were still regarded as belonging to that class of person designated as ‘rogues and vagabonds...’”

—*A History of The Actors' Fund of America*, 1972.

In 1885, The Fund purchased a plot at the Cemetery of the Evergreens in Brooklyn, and in 1887 a granite obelisk monument was dedicated during a ceremony presided over by Edwin Booth whose niece was later buried there. In 1904, a second plot was purchased at Kensico Cemetery in Valhalla, New York.

Thanks to your support, we continue to provide a final resting place for people in entertainment without the funds for a proper burial.

*A final resting place for more
than 2,000 members of the
entertainment industry*



The cover of Harper's
Weekly—June 18, 1887.



The Evergreens
monument in 2011.



Erecting the Kensico
obelisk in 1941.



The Kensico
monument today.

60 or Older and Living in NYC's Clinton/Hell's Kitchen or Chelsea Neighborhoods? Take Our Survey!

New York City's Clinton/Hell's Kitchen and Chelsea neighborhoods are the theater district's backyard. These neighborhoods have historically been home to people working in the performing arts with Manhattan Plaza, the largest performing arts residence in the country, at the heart of the community.

With the number of people over 55 doubling in the next 20 years and Manhattan Plaza already home to over 1,000 seniors, we are focusing in on these neighborhoods to better understand the changing needs of older performing arts professionals. In partnership with Manhattan Plaza's Rodney Kirk Center, Visiting Nurse Service of New York and Community Board 4, we'll be conducting a survey of people over 60 years old residing in the Clinton/Hell's Kitchen and Chelsea neighborhoods.

The survey, live through December, will seek information on demographics, living arrangements, health, community concerns and specific questions designed to target issues particular to performing arts professionals. The findings will provide a better understanding of needs, identify gaps in services and help us organize and further develop resources and services for seniors in the entertainment and performing arts community.

Visit www.actorsfund.org/CommunitySurvey to take our survey. Questions? Contact Judy Rosch at 917.281.5988 or jrosch@actorsfund.org.

**Did you
know**

We're the official employee assistance program for the Metropolitan Opera? Visit www.actorsfund.org for a full listing of our Union/Partner Programs.

The Met
ropolitan
Opera

MARQUEE FALL 2011
VOLUME 14, NUMBER 2

The Actors Fund is a national human services organization that helps all professionals in performing arts and entertainment. The Fund is a safety net, providing programs and services for those who are in need, crisis or transition.

National Headquarters

729 Seventh Avenue
10th Floor
New York, NY 10019
212.221.7300
Fax: 212.764.0238

Midwestern Region

203 North Wabash
Suite 2104
Chicago, IL 60601
312.372.0989
Fax: 312.372.0272

Western Region

5757 Wilshire Boulevard
Suite 400
Los Angeles, CA 90036
323.933.9244
Fax: 323.933.7615

The Al Hirschfeld Free Health Clinic

475 West 57th Street
New York, NY 10019
212.489.1939

The Dorothy Ross Friedman Residence (formerly The Aurora)

New York, NY
212.489.2020

The Palm View

West Hollywood, CA
323.933.9244

The Lillian Booth

Actors Home
Englewood, NJ
201.871.8882

The Schermerhorn

Brooklyn, NY
718.640.1845

Marquee

212.221.7300 ext. 176
Fax: 212.536.7658
dengelman@actorsfund.org

Actors Fund Programs:

SOCIAL SERVICES

Entertainment Assistance
Program
Mental Health
Chemical Dependency
HIV/AIDS Initiative
Senior and Disabled Care
Phyllis Newman Women's
Health Initiative
Financial Wellness
The Dancers' Resource
American Comedy Fund
HOWL Emergency
Life Project
Conrad Cantzen Shoe Fund
Funerals and Burials
Union/Partner Programs

HEALTH SERVICES

Artists Health Insurance
Resource Center
Al Hirschfeld Free
Health Clinic

EMPLOYMENT

AND TRAINING
The Actors Fund Work
Program (AWP)

SUPPORTIVE AND

AFFORDABLE HOUSING

The Lillian Booth
Actors Home
The Dorothy Ross
Friedman Residence
(formerly The Aurora)
The Schermerhorn
The Palm View

For more information on Actors
Fund programs, please call
800.221.7303 or visit our
website at www.actorsfund.org.

Photo credits:

Jay Brady, Bill Dow,
Lyn Hughes, Karissa Krenz,
Daniel G. Lam, Phil Mansfield
Design: Holly Wheeler
Copy: David Engelman,
Judy Frank, Karissa Krenz,
Wally Munro, Jeff Potter,
Susan Varon

 **Mixed Sources**
Product group from well-managed
forests, controlled sources and
recycled wood or fiber
www.fsc.org Cert no. SW-COC-1855
© 1996 Forest Stewardship Council

Helping Everyone in Entertainment: A Social Services Timeline

A Summary of the ongoing development of our free and confidential Social Services

Note: year indicates when each program began.

1982 Mental Health Services

Helps people address issues like depression, anxiety, eating disorders and post-traumatic stress, as well as those struggling with long-term psychiatric disabilities.

Confidentiality, respect and preservation of dignity are hallmarks in the delivery of all of our services.

1987 Senior Services

Helps people maintain their independence in their later years, by providing connection to essential resources, financial planning, counseling, family education and support, and home and hospital visits to help coordinate care.

Larry

"Being a client of The Fund is remarkable. They have an intense knowledge of the special needs of our community. Without them, there would be a chasm in show business."



1987 Services for the Disabled

By stepping in when someone in our community experiences an unforeseen health crisis, this program helps people stabilize their situation and create plans to sustain themselves during recuperation.

In 2010, our services for seniors and the disabled saw a 23% increase in the number of people seeking assistance.

1989 Chemical Dependency Services

Aids our community and their families in receiving treatment for substance abuse and addiction through comprehensive counseling and case management services. We help people recognize problems of abuse and addiction, and develop individualized treatment plans.

What our clients say...

"I had a successful career which drugs and alcohol were about to destroy. When I was introduced to The Actors Fund, I was given a helping hand and a bridge back to sanity."

1998 AIDS Training and Education Project (ATEP)

With the introduction of AIDS medications, ATEP was established to help those who are able to return to employment and/or engage in meaningful activity. Today, our clients living with HIV/AIDS are supported in these endeavors through our Actors Fund Work Program.

2007 The Dancers' Resource

Founded by Trustee Bebe Neuwirth, this program was created as a support system in response to the unique situation dancers face due to the physically demanding nature of their work, coupled with the significant financial challenges of earning a living in dance.

Jesse

"They helped me regain my dignity and sense of self after a recent injury. I was given the tools to solve my problems and that is extremely gratifying. I felt a sense of sadness and heaviness that were lifted out of me."



2011 American Comedy Fund

Without a union, guild, or other protection, many comedians face unique challenges to succeed and survive. This partnership program with the Entertainment Industry Foundation, The Actors Fund and Motion Picture & Television Fund was established to provide the comedy community much-needed social services, emergency assistance, health care, insurance, housing, and employment and training services.

1985 Career Transition for Dancers (CTFD)

Created to help dancers from all disciplines to define their career possibilities after dance. Now a separate organization, we collaborate with CTFD by helping dancers through career counseling and tuition assistance. Visit careertransition.org.



1987 HIV/AIDS Initiative

Provides extensive services like coordination of medical care and in-home supports, home and hospital visits, educational and support groups, and extensive financial assistance for homelessness prevention, food, utilities and medical care, health insurance and other basic necessities.



Maria

"They helped me get housing and gave me emotional support and listened to me when life was difficult. I have a second family—I don't consider myself a client."

Since the earliest days of the crisis, the HIV/AIDS Initiative has helped the newly diagnosed, those living and working with the virus and those who are ill. Our ongoing ability to take action has been a direct result of the creation and support of Broadway Cares/Equity Fights AIDS. Today, BC/EFA supports six programs at The Actors Fund, including the HIV/AIDS Initiative, the Phyllis Newman Women's Health Initiative, The Al Hirschfeld Free Health Clinic, The Actors Fund Work Program and The Dancers' Resource, as well as numerous projects such as The New York Stage Managers Unofficial Health Directory and more. Visit broadwaycares.org.

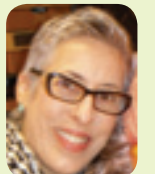


1996 Phyllis Newman Women's Health Initiative (PNWHI)

Founded by Trustee Phyllis Newman and created to promote our services for women and their needs when facing significant medical concerns, such as breast and ovarian cancer, lupus, eating disorders and domestic violence. Offering financial assistance, counseling, support groups and a wellness program. PNWHI helps women to navigate the health care system, making sure there is always a helping hand.

Zoë

"They don't just give you money, they stay behind you. They give you social services for moral support—who to call, what agencies might be able to help you beyond what they can do—and because they deal with it so much, they know what people need. The best part is, it relieves the stress of how you're going to pay the rent and not lose your insurance when you're in treatment. I knew that those bills were covered, so I could relax a little bit and just deal with getting better."



2003 Financial Wellness

Many people in entertainment have erratic incomes due to the episodic nature of work in show business. This program provides financial education, counseling and support to help people identify strategies for balancing income and expenses, reduce or eliminate debt, establish financial boundaries, and explore limiting beliefs about financial competence and self-worth.



Rachel

"As a performing artist, I have tried to seek advice outside of the industry, but other financial consultants didn't understand the nature of my finances. But you don't see that here—I feel so much love and support because they understand. They're experts here."

2009 HOWL! Emergency Life Project

Provides emergency assistance to performing artists from the NYC East Village Community (especially focused toward participants in the annual HOWL! Festival) whose work challenges the traditional boundaries of dance, theatre, music, multimedia and the spoken word.

Actors Fund Special Performances and Events

Special Performances and Events help make possible the programs and services provided by The Actors Fund for EVERYONE in entertainment. Thanks to the casts, musicians, stage managers, volunteers and our wonderful donors who made these fundraising events so successful!

Special Events



The LA team walked on May 7, joined by members of Actors' Equity.



The Fund's New York Team gathered on April 30 to honor Lynn Redgrave and in support of Gail Perlman.

Annual Revlon Run/Walk—LA/NYC

Members and supporters on both coasts met to run and walk in support of all the brave women in our lives that have been affected by cancer. We remembered our longtime supporter and Trustee Lynn Redgrave, and walked in honor of former Fund employee Gail Perlman.



Gala 2011

Our May 23 Gala raised more than \$1 million! This year's honorees were (l-r) Michael J. Stengel and Marriott International, Al Pacino and Bebe Neuwirth. Michael and Bebe received our Medal of Honor, and Al was awarded the Lee Strasberg Artistic Achievement Award.



(l-r): Chair of the Western Council John Holly, President Joseph P. Benincasa, Sean Penn, Hal Holbrook, Marilu Henner, Brian Stokes Mitchell and Trustee Jomarie Ward.

15th Annual Tony Awards Viewing Party

On June 12, members and supporters gathered to watch the Tony Awards in Los Angeles and honor Hal Holbrook with the Julie Harris Award for Lifetime Achievement, presented by Sean Penn. The event was hosted by Marilu Henner.



(l-r): Ernie Sabella, Toby McDonough, Peter Gallagher and Bobby Score.

CelebriTEE Golf and Tennis Outing

Hosted by Peter Gallagher and Liz Callaway at the historic Knickerbocker Country Club in Tenafly, New Jersey, our golf outing on July 25 raised funds for The Lillian Booth Actors Home in Englewood, New Jersey.

A big "thank you!" to the producers of these hit shows, whose donation of "Producer's Picks" tickets allow you to see Broadway's finest from the best seats in the house while supporting The Actors Fund!

- The People in the Picture*
- That Championship Season*
- Mary Poppins*
- Arcadia*
- The Importance of Being Earnest*
- Zarkana*
- Bengal Tiger at the Baghdad Zoo*
- Shrek (Los Angeles)*
- Priscilla, Queen of the Desert*



Visit www.actorsfund.org to browse our upcoming shows and reserve your tickets!



(l-r): Bebe Neuwirth, Dancers' Resource client Jesse Factor, Sydney Neuwirth, and Chris Calkins.

The Mother/Daughter Art Show

Bebe Neuwirth and her mother, Sydney, co-hosted a one-night benefit for The Dancers' Resource on April 4, featuring the sale of photographic prints by Ms. Neuwirth, and paintings of ballet dancers by her mother. Client Jesse Factor was on hand to thank our donors for the help he received from The Fund. Thanks to Bebe, Sydney and Bebe's husband Chris Calkins for a wonderful evening.



Musical Monday—Billy Barnes and Friends

Our Musical Monday at The Pantages on May 9 celebrated the life and career of beloved composer and lyricist, Billy Barnes. Joining Billy were Eileen Barnett, Carole Cook, Nancy Dussault, Jane A. Johnston, Karen Morrow, JoAnne Worley and others.

Special Performances

Thank you to the Broadway companies of *Rain*, *Catch Me If You Can* and *The Lion King* who all gave rousing Special Performances! Reserve your tickets for our next exciting event by visiting www.actorsfund.org!



Rain



Catch Me If You Can



The Lion King

Donor Profile

Judy Frank



Judy was born in Cincinnati, Ohio, and grew up across the river in Fort Thomas, Kentucky. No one in her family was in show business—her mother was the truant officer for the local school district and her dad was an insurance adjuster—but Judy started performing when she was in the third grade, appearing in variety shows. She received a BA in theatre from Indiana University and an MFA from Yale Drama School. After graduating, she worked at Williamstown Theatre Festival and then headed for New York.

Her first audition on a New York stage was at the Helen Hayes Theatre for a national tour of *Mary, Mary*, understudying Teresa Wright. She got the job and had to leave for California that weekend. When she went to sign her contract, Terry Faye, the casting director, and Bill Ross, the director, were in the office, but their secretary was out sick. The contract wasn't ready, and neither of them could type. Judy had been warned by friends never to let anyone in the theatre know that you can type or that would be all you'd ever be asked to do, but this was a crisis! She typed her own contract and left for Sacramento the next day.

In those days, everyone in the theatre was paid weekly in cash. On the night of her first payday, someone stole her wallet and all the money she had to her name. She told her castmates about it, and they surprised her, when the next night an actor in the company, Hiram "Chubby" Sherman, came to her dressing room

"I love the optimism of The Fund and their deep respect for those in the profession."

and handed her a new wallet filled with cash. He and the rest of the company, including Teresa Wright, Scott McKay, Tom Helmore, Michael Sinclair, Gale Gladstone, Henry Caubisens, and even, as Chubby wrote, "of all people George Oshrin"—the company manager who was considered tight with his money—had contributed to make her whole. Judy had always considered theatre folk family, and this proved it. She eventually played Mary on Broadway at the Helen Hayes.

Judy continued to work in theatre, film and commercials. In 1969, she met Mike Mearian on an industrial film for Macy's. The script called for Mike to fire Judy from her job, and in reality he asked her to dinner. That was the start of their great romance—they were married in 1970. Mike served as a Fund Trustee from 1991 until his death in 2009. Judy says that the best gift Mike ever gave her was her Life Membership in The Actors Fund.

Judy, a longtime supporter and In the Spotlight member, encourages individuals to join her as a member of the Edwin Forrest Society, which recognizes our supporters who have included The Fund in their estate plans. She's proud to be a part of The Fund family. "So many in the profession don't have family. The Actors Fund is your family when you need one. I love the optimism of The Fund and their deep respect for those in the profession." We're lucky to have Judy as one of our champions.

Contact Wally Munro, Director of Planned Giving at 917.281.5128 or wmunro@actorsfund.org and join Judy as a member of the Edwin Forrest Society today.

The Actors Fund, for everyone in entertainment. www.actorsfund.org

Find us on



Follow us on



Board of Trustees

Brian Stokes Mitchell
Chairman of the Board

Marc Grodman, M.D.
Secretary

Abby Schroeder
Assistant Secretary

John A. Duncan, Jr.
Treasurer

Steve Kalafer
Assistant Treasurer

Philip S. Birsh
Vice Chair

Bebe Neuwirth
Vice Chair

Philip J. Smith
Vice Chair

Joseph P. Benincasa
President and CEO

- Alec Baldwin
- Annette Bening
- Jed W. Bernstein
- Jeffrey Bolton
- John Breglio
- Gilbert Cates
- James J. Claffey, Jr.
- Nancy Coyne
- Merle Debuskey
- Rick Elice
- Janice Reals Ellig
- Joyce Gordon
- Ken Howard
- Anita Jaffe
- Kate Edelman Johnson
- Michael Kerker
- Stewart F. Lane
- Paul Libin
- Matthew Loeb
- Kristen Madsen
- Kevin McCollum
- James L. Nederlander
- Martha Nelson
- Phyllis Newman
- Dale C. Olson
- Lee H. Perlman
- Harold Prince
- Roberta Reardon
- Charlotte St. Martin
- Thomas Schumacher
- David Steiner
- Edward D. Turen
- Tom Viola
- Honey Waldman
- Jomarie Ward
- Joseph H. Wender
- B.D. Wong
- Nick Wyman
- George Zuber

Acknowledgements



United Airlines is the official airline of The Actors Fund.



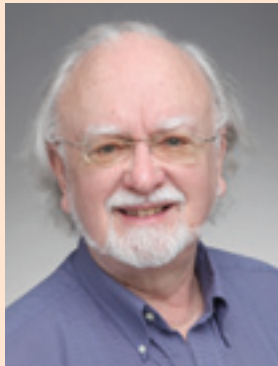
Official New York City Hotel

Our Clients Share Their Stories

Your support provided \$2.5 million in emergency financial assistance to 1,620 people last year, helping them to

- prevent evictions
- get access to emergency medical care
- pay for essential utilities
- buy life-saving medications
- pay for funeral expenses
- see their doctor or psychotherapist
- cover hospital fees, and
- maintain health insurance.

William Senior Services



“The Actors Fund was an additional family member who had the right information at the right time. Lucy Seligson and The Actors Fund—the two things seem almost synonymous to me—have been such a godsend, and I don’t know if I would’ve survived without her—and your—help.”

William spent his career as a singer with ensembles like the Western Wind and taught privately and in schools throughout the city. When he was diagnosed with colon cancer about two years ago, he found a wonderful surgeon in his northern Manhattan neighborhood who removed the tumor. Unfortunately, William also found out many of his costs wouldn’t be covered by his insurance provider, and he was stuck with an enormous bill. “Medically I made the right decision,” says William, “but because of the insurance issues, it became a problem.”

Unable to pay, he turned to The Fund for help. Over a two year period, William worked with Supervisor of Seniors and the Disabled Program Lucy Seligson on managing his debt. He got help in negotiating down three hospital bills and two private physician bills, and through coordinated financial assistance from The Fund and the AGMA Relief Fund, ended up with a manageable payment plan.

The Fund’s Health Insurance Resource Center also helped William identify a better plan to ensure the ongoing coverage he needs to avoid going into debt for medical expenses. Lucy also counseled William throughout his chemotherapy, allowing him to focus on healing—both emotionally and physically. “From the time I met Lucy, I’ve been in a better place...I’ve gone on with my life. I’m singing again and I have about ten students I see all the time.”

“I’m a reasonably intelligent person. I sometimes wonder how people who maybe know less about issues like these would survive at all. I feel it’s been a huge help—a necessary help to me—and I can imagine there must be hundreds of other people who appreciate what The Actors Fund is doing for us.”

Pi

HIV/AIDS Initiative



“It’s a wonderful organization for me and for people like me who have been in the industry. It’s a lifeline.”

A longtime “triple-threat” singer, actor and dancer, Pi has done 13 Broadway shows, or in his words “six hits and seven flops,” including his first—*The Fig Leaves Are Falling* directed by George Abbott, and *Hello Dolly*, *Pearly*, *The Wiz*, *A Chorus Line*, and *La Cage Aux Folles* to name just a few.

In 1989, he played a role as a health care provider in *Longtime Companion*, the first wide-release theatrical film to deal with the subject of AIDS. “A long time career of doing all these shows—and then doing a movie of significance to culture, and I was a part of it.” Unfortunately, the month before filming, his first lover and best friend both died of AIDS. “I knew how to change the diaper, they didn’t. [In the film], I was the health care provider who knew.”

In that same year, Pi was diagnosed with AIDS and went through what he calls his “dark days.” In 1994, Pi’s mother moved him into the Bronx Lebanon Special Care Center. When she was in search of another facility for her son, Pi’s friend, actor Andre de Shields, suggested The Fund’s Dorothy Ross Friedman Residence (formerly The Aurora), and Pi moved in. The Friedman provides supportive housing to people living with HIV/AIDS, as well as special low-income groups including seniors and working professionals.

Pi has been involved with The Fund over the past 22 years. He adds, “I was nurtured through that whole journey by Dale Daley, then an intern, and then Keith McNutt, and now Kent Curtis. Every one of those men have been lovely, supportive.” Pi notes, “The Actors Fund took the walking dead and said, ‘You’re not dying because we have your hand.’”

In 2004, Pi joined The Fund’s first writers group for HIV+ clients, where he continues to write plays—and even has a literary agent. Today, he is healthy and living on his own in New York City in an apartment he loves. Most recently, The Fund helped him with the purchase of a hearing aid.

“I got to view the first black president and same gender equality. I can be married now! Thank you for helping me be alive to see these two moments of my life. I am the happiest person in the world, because I get to see things now that were unheard of. I’m supposed to be dead. That’s what The Actors Fund has given to me.”

Alicia

Services for the Disabled



“I love those people. I am so grateful to the team—and they do work as a team. When you’re going through hard times, having their support and guidance makes all the difference.”

Alicia was enjoying a thriving acting career when she went for routine surgery in 2006. Following surgery, she contracted a near fatal hospital acquired infection, resulting in six additional surgeries, extensive physical therapy and years of painful treatments.

Without the ability to work, she was struggling to pay her bills. “I was financially hurting, physically hurting and emotionally hurting.” A friend told her about The Actors Fund, and Alicia went for an orientation.

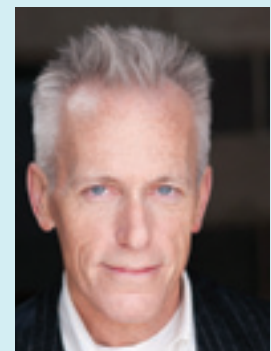
“[Fund Social Worker for Seniors and the Disabled] Frank Salamone really resonated with me. He is an amazing, compassionate person who deeply cares. And through his work and The Fund’s help, I was able to get all kinds of assistance with my disability—including financial help with paying my rent.” Frank also arranged for Alicia to enter the first incarnation of “Living Well in the Industry,” a Fund group for women struggling with issues of illness, injury or disability, where she developed friendships which endure even today.

The Fund connected Alicia with a variety of supportive resources, including the SAG Foundation’s Catastrophic Health Fund for help in paying her SAG insurance due to lack of work. Also, through The Actors Fund Work Program, she decided to take her passion for advocacy and formalize it into a career.

Alicia has since co-sponsored a Senate bill—signed into law in 2008—calling for public reporting of hospital infection rates and for improved training of hospital staff to prevent hospital acquired infection. Also, she is working toward a Certificate in Health Care Leadership and Management thru the UCLA School of Public Health, and has formed a non-profit (PatientSafetyASAP.org), to educate and protect patients through awareness of hospital acquired infections.

Larry

Financial Wellness Program



“It not only made my pocketbook healthy...it helped me calm down, to manage things emotionally as well as financially. I totally see a light at the end of the tunnel—I thought I would have no home, and now I do.”

Born in New York, Larry moved to Chicago 20 years ago to pursue his MFA and ended up staying—he’s worked in all of the city’s major theatres, teaches, and has had a generally successful career. After touring for three years as Scar in *The Lion King*, Larry invested his savings in a condo, right before the subprime mortgage industry collapsed. Though he continued to work regularly, the economy forced his salaries down and he soon found himself living month-to-month...until a few months ago, when he hit an extended period without any employment and was unable to pay his bills.

Larry had called upon The Fund once before—over ten years ago when he’d had surgery to remove a tumor in this thigh and couldn’t pay his rent—so, between high mortgage payments and a shockingly high increase in his medical bills (he’s still dealing with the aftermath of his leg condition), he decided it was time to reach out for help again.

Larry called Don Towne, Director of Social Services at The Fund’s Chicago offices. While he initially went in to get financial assistance, he immediately realized Don was there to help him to get his entire life in order. “I went in thinking I’d be dealing with something like a bank teller, and ended up with a confidant and a friend who has helped me get through it emotionally as well as financially—that was what was so wonderful about it.”

The Fund helped Larry get through his rough patch, and today he’s back at work. “I’m going to be OK. It really was because of The Actors Fund, and to me The Actors Fund is Don Towne.”

Melissa

Entertainment Assistance Services

“It’s helpful for me to have someone I can go talk to every week, to talk stuff out and figure out where I was and why I was there.”

Melissa used to produce and cast reality television, but about 8 years ago she realized acting was her true passion, so she decided to change her career path. When things began to get rough, she took the advice of her acting coach and a friend, and contacted The Actors Fund. She initially utilized the Entertainment Assistance Program, which helped her through an especially difficult financial time, when unemployment benefits combined with inconsistent industry and sideline earnings was not always covering all her basic living expenses.

Since then, she has taken advantage of other programs, including one-on-one counseling, financial wellness seminars and The Actors Fund Work Program. She’s found a wonderful support system that has helped her reassess her outlook on work and her life, and she now realizes she can sustain herself in a meaningful way while at the same time engaging in her passion. She currently works as a production coordinator and is part of an improv troupe, which performs regularly in Los Angeles, and is actively pursuing her acting.

“I’m just really grateful that I found The Actors Fund at the right time for me, and then I reached out for help, and they just gave me a little financial relief and a support system to make it through a really rough patch. I haven’t figured everything out yet—I’m not even close—but I feel better about it. I feel there’s support there, and they just helped me through, and I can’t really express how grateful I am for that. They’re there, and you never know how they can help.”

Abbie

The Dancers’ Resource

“Dancing is a career so driven by passion and heart that an injury can leave you feeling more mentally defeated than physically. That’s where The Dancers’ Resource really provided support from all angles.”



Having danced with The Rockettes, Broadway shows, and national tours, Abbie was no stranger to rigorous physical demands. But a pain that started during the run of *White Christmas* worsened, eventually leaving her unable to walk. Hip surgery ensued, requiring years of physical therapy that snatched away her livelihood. “I’ve danced through injuries before,” she says. “But this time I was really scared.”

A fellow dancer referred Abbie to The Actors Fund, where social worker Alice Vienneau arranged for financial assistance, enrolled her in a Dancers’ Resource support group and connected her with career counseling at The Actors Fund Work Program.

Today, Abbie is back on her feet, working part time with a technology firm. She also draws commissioned portraits—a skill she honed during her injury down time—and even tackles occasional short-term dance jobs. “Joining the Support Group for Injured Dancers was such an emotionally supportive tool,” she says. “It addressed all the problems including physical pain, the financial stress, and the emotional depression of not being able to do what you love...Being able to get my head straight allowed everything else to fall into place, enabling me to move forward.”

Daniel

HIV/AIDS Initiative

“It’s not just the money, it is the support: the unfailing, absolute courtesy shown by those people. They absolutely understood everything I was talking about—and I’ve had several caseworkers over the years. It’s like they’re miracle workers. I don’t know where they get the patience to deal with what they deal with. They are probably the most superb professionals that I’ve ever dealt with in my life, period.”

A client since 1988—the same year he was diagnosed with HIV—things had hit rock bottom: incredibly ill and faced with an inability to pay his bills, Daniel thought it was the end of his life, and he would be forced to live out his few remaining months in a facility. But a social worker from The Fund assessed his situation, and figured out what it would take to stay in his home. It turned out to be a very small monthly stipend from The Fund.

Since then, his Fund social workers and support groups have kept him afloat financially and mentally, making sure he could pay his medical bills, keep his secondary insurance and much more. Although his health has greatly improved, he’s still unable to work outside of his home. Fortunately, his Actors Fund support system has empowered him to convert a walk-in closet into a home voiceover studio. Refusing any additional financial help from The Fund, he’s budgeted, used his contacts to get equipment, and will soon be able to afford to have it all installed.

“I might be able to make enough money to give myself dignity again, some work again, and I could free up my little portion of Actors Fund money for somebody else, and there are a lot of people that need this.”

Jose

Chemical Dependency Services

“Good things happen. I have come to and stayed with the program because of The Actors Fund. I have a social worker who is concerned about me, who I feel is genuinely paying attention to my needs. My life is immeasurably better.”

Jose is a long-time musician who struggled with alcohol abuse for years. When he hit bottom two years ago and ended up in rehab, he turned to The Fund for help.

“I’m one of the luckiest people on the face of the planet. A: I’m still alive. B: I have a great job. But C: I am lucky because this program was there when I needed it—it was available to me for my post-rehab care. I couldn’t have organized it myself.”

The Fund’s Supervisor of Chemical Dependency Services Rosalyn Gilbert connected him to a number of programs to help maintain his sobriety, including group sessions and Alcoholics Anonymous, set him up with a therapist and met with him every week. In addition to offering support for maintaining his mental health, Rosalyn also encouraged him to improve his physical well-being in order to combat his diabetes, and worked with him to successfully clean up his finances.

Today, he’s healthier—physically, emotionally and financially—than he’s ever been. He continues therapy, his bi-monthly meetings with Rosalyn, and is an important part of the Green Room AA meeting, which is for people in performing arts and entertainment.

“I have a great life now. As my mom said, ‘It’s been a long terrible trip, and I have my son back.’”

Noel

Services for the Disabled

“It saved me, it certainly did—it’s a great organization.”



A successful set dresser for film and television—one of his most recent gigs is HBO’s *Treme*—Noel spent the last six years taking advantage of New Orleans’ post-Katrina entertainment industry boom. He was doing wonderfully until four months ago, when he severely broke his wrist, which needed surgery and landed him overnight in the hospital. Though the hospital was in-network, there was confusion over insurance, and since he didn’t notify the company himself within 48 hours, he was hit with a huge penalty—50% of the cost.

On top of the enormous bill, Noel was faced with an inability to earn money. Since his accident wasn’t at work he couldn’t claim workman’s compensation, and he wasn’t eligible for unemployment. His family helped with some money, and then a friend and his local union office, IATSE Local 478, pointed him to The Fund.

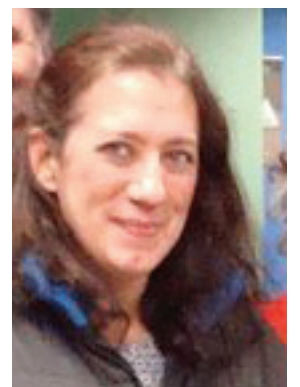
“[Chicago Director of Social Services] Don Towne was really sweet on the phone and helped me out a great deal. He called me one morning and said they’d approved my application and they’d pay my month’s rent, and also my car insurance. It was a huge, huge help...it was overwhelmingly good for me—a life saver. I called Don up and told him how much I appreciated it.” Don also counseled Noel on how to negotiate with health care providers to bring his bill down to manageable payments.

Noel continues to appeal his bill and, now that his wrist has healed, is searching for work until *Treme* resumes production in the fall.

Mary

Phyllis Newman Women’s Health Initiative (PNWHI)

“Odds are you won’t get hit by a car one morning as happened to me. You don’t think it could happen. But it could be you. And people should know that The Actors Fund can help in a sudden, random situation like that. They’re there for that too.”



Mary’s worn many hats in the theatre world including stage manager, production manager, marketing director and IT consultant.

In the early 90s, Mary participated as a Buddy Team Leader for The Fund’s HIV/AIDS Initiative. Little did she realize that her good will would be returned in her own time of crisis. Mary’s severe 2009 accident resulted in multiple fractures throughout her body and traumatic brain injuries. PNWHI Social Worker Amy Wilder stepped forward to arrange for Visiting Nurse Services support, physical therapy sessions, ESTA Foundation financial aid and mental health care.

Amy also navigated another frustrating challenge that overwhelmed Mary: the morass of insurance complications. “I never realized that dealing with health insurance claims would become a full-time job in itself!” recalls Mary.

With the help of PNWHI and her own tenacious spirit (“The stubborn aspect helps,” she laughs), Mary’s now working IT jobs part-time and continues to improve her walking ability. “Today is definitely a world apart from last year,” she says. “Hopefully, I’m going to win the lottery some day. And, seriously, The Actors Fund would be the recipient. They do wonderful things.”